



www.ptawoodworkers.com

August 2019

Augustus 2019

From the Chairman



Chairman Neville Comins

A time to reflect and look forward

Anniversaries are always times to reflect and look back at what were the original goals and what have indeed been the outcomes. In the case of our Association, which has achieved 30 years of success since its launch in 1989, one can look back in tribute to the vision and energy of its founders, most notably Willie Marneweck, and the 20 first members. Sadly the last couple of years have seen the passing of some of these pioneers.

Going right back to the initial 'promotional document' by Willie, it is interesting to quote his words:

- Firstly this was to be an Association for "fine woodworking in Pretoria".
 - Fine woodwork was not carpentry but the "use of good quality wood to create articles and works of art. It includes cabinet making, but also wood turning, carving, etc."

- The intent of the Association was:
 - To meet other interested persons;
 - To hold exhibitions to show persons crafts;
 - To share ideas and tips and solve problems;
 - To hold workshops to demonstrate practical skills.

Indeed, these founding concepts have stood the test of time with membership growing to 96 by 1997 (16 of whom are still members) to the 160 of today. The Exhibition has been held every year since inception and has been expanded to bring in other crafts to enhance the event. The Specialist Groups of cabinet makers and restorers, wood turners, and carvers bring people of common interests together for demonstrations, sharing of experience and discussions of techniques. All of these as envisioned at the start.

But, much has changed over the years. Firstly, many of the earlier members had exposure to woodworking at school, or through family members, and so had already developed a passion and skills from an early age. This sadly does not happen often enough today, and thus the needs of newer members are changing. Partly due to this, our age profile is skewed to people in their later years and for renewal of the Association, we must attract younger enthusiasts and accommodate their needs and expectations.

Secondly, the advent of social media, the plentiful supply of information, new tools and techniques, etc. have provided new sources which may introduce the perspective that the interaction with other woodworkers is less important. However, woodwork is a skills-based activity and nothing beats a morning with someone with deep experience and practices. But still we need to be more aware of trends like this if we are to grow and remain vibrant as an Association.

Thus we will be asking our members to review what we are doing as an Association and see if adjustments to our objectives are required, or that certain activities should be strengthened or new ones added. We must be flexible and continue to grow by satisfying new requirements of members. We look forward to our "Wood Expo and Craft Festival" in October, where again the prowess of our many members can be shown and others visiting can see the benefits of membership.

Association 30th Anniversary Celebration 14 August 2019

Thirty four members plus their partners met at a restaurant at Loftus Versfeld for a Celebratory 30th Anniversary Dinner on Wednesday 14 August 2019. A group Photograph of the Members who attended is given below.



Chairman Neville Comins welcomed all and asked several Founder and early Members to speak.

The Founder Members who are still in the Association are: At Smit, Willie Marneweck, and Pieter du Preez. Carl van Rensburg attended an informal meeting to discuss the formation of the association, but could not attend the inaugural meeting. He was then studying and only joined formally four years later.



Founder Member Willie Marneweck

Willie gave an overview as to how the Association was formed. Several people considered that such an Association would be beneficial (see From the Chairman above). An advertisement was placed in local newspapers and a preparatory meeting held on 1 February 1989. The meeting was attended by 25 persons. There was considerable interest in forming such an Association. Four persons drafted a Constitution which was approved at the inaugural meeting of 15 March 1989. The membership at that stage was 30 and there was a steady growth of membership. To date we have had 15 different Chairmen.

The membership class of Honorary Member was instituted for exceptional contributions. The Tambotie Newsletter was started and has gained popularity, thanks to the efforts of its Editors. The Annual Exhibition was started from year 1 at Hardware Centre in Pretoria. Initially the emphasis was on furniture and subsequently the turners were established. This involvement led eventually to the establishment of the AWSA (Association of Woodturners of South Africa). Later on the various interest groups were formed.

Unfortunately **At Smit** could not attend as it was his wife's birthday. At had sent in some notes which Willie referred to. At initially undertook cabinet work, but became interested in turning. The improvement in lathes, tools and sharpening systems led to improved and more complex techniques. Willie mentioned that At had started from scratch and is now a recognised international turner. He has been asked by several art galleries to exhibit.

Willie concluded by mentioning the important role that the younger members and ladies play and will play in the Association.



Carl van Rensburg

Carl gave the background to his membership of the Association which is mentioned above. He considered that apart from the technical role of the Association that it also has a vital social role which is filled with humour and friendliness.



Members who attended the 30th Anniversary Dinner

**Association's Monthly Meeting:
28 August 2019**

By Paul Roberts

The meeting topic was *Innovation in your woodwork*. The emphasis was on what was new to you and who did you consult to gain the information? Various members gave short interventions which are illustrated pictorially below. The meeting was attended by 33 members and visitors.



Marius du Toit has developed a series of products which he can mass-produce for sale. See detail on *bonkibanki woodcraft* on Facebook



Douglas Lock produced a routing jig for cutting repetitive grooves. Douglas endorsed the use of a pinner for easy and quick construction of such jigs.



Neville Comins has taken up marquetry again after a lapse of about 40 years!

A few other members made short interventions.

Cabinet Makers and Restorers: 17 August 2019

By Paul Roberts

The topic for the day was *Handtool tuning and maintenance*. There is an increased emphasis on the use of handtools in woodwork and proper sharpening and care is essential. The cost of many handtools is high. The meeting was held in the Hall of the St Francis Presbyterian Church in Waterkloof. The meeting was attended by 21 persons. Presentations were made by three members.



Paul Roberts made this unit which fits on a lathe and is used in conjunction with a router to make accurate dowels.



**Carving of a box lid by Alida Myburgh
Box by Leon Wolmarans**



Louw Trichardt presenting the sharpening and care of handtools



**Luw discussing chisel sharpening.
Note the mirror-like back of the chisel**



**Dries du Toit refurbished this spokeshave and
once sharpened it performed well**



**Paul showing the range of sharpening stones he
uses**

Luw Trichardt gave a highly pragmatic and practical talk on the subject. His key lecture notes (In Afrikaans) are available on the website.

Paul Roberts made a PowerPoint presentation on the topic which is also on the website.

Dries du Toit discussed how he improved the performance of a spokeshave by attention to proper sharpening.

Draaiersbyeenkoms op 24 Augustus 2019 Deur Lou Coetzer

Met die winter nou skynbaar agter die rug, het die draaiers vir die maandelikse vergadering in die Scoutsaal byeen gekom. Die klein getal huiswerkstukke was ook tekenend van die relatief klein getal teenwoordiges.

Die hoofdis op die spyskaart was 'n demonstrasie deur Carel van der Merwe oor KLEURWERK OP DRAAISTUKKE.

Carel het die praatjie begin met twee vrae. Die eerste: **Kleur of nie kleur nie?** Vir sommige draaiers is die antwoord maklik want hulle het reeds daarvoor standpunt ingeneem. Carel sou dan die subtiel en minder subtiel aanwending van kleur aan ons voorhou.

Die tweede vraag sou noodwendig volg indien 'n draaier reeds besluit het om te kleur, en is: **Watter soort kleurstof om te gebruik?** Carel het verduidelik dat die twee soorte kleurstof wat die algemeenste beskikbaar is en gebruik word, kleurstowwe met 'n waterbasis en dié met 'n alkoholbasis is. Hy het verduidelik onder watter omstandighede elkeen gebruik word.

Daarna het Carel gesels oor houtsoorte wat die geskikste is vir kleuring – ligte soorte – en dié wat beslis nie gekleur moet word nie – donker soorte – of dalk net op sekere plekke om dit met kleur te beklemtoon. Om sy stellings te staaf, het Carel telkens geskikte voorbeelde vir ons rondgestuur.



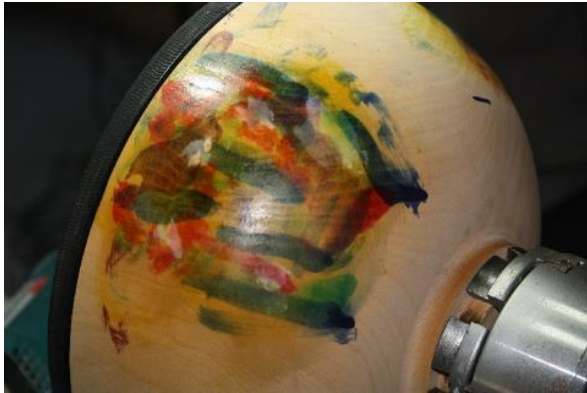
Carel van der Merwe verduidelik 'n aspek aan die draaiers. / Carel van der Merwe explaining a certain aspect to the turners.

Vir die verduideliking van sy Delft-effek op hout, het Carel die oorsprong van hierdie toepassing vertel en die stappe genoem om die hout soos Delft-porselein te laat vertoon. Die belangrikste stap is die aanwending van "liming wax" op die reeds gekleurde hout.



'n Jakarandavaas met "liming wax" slegs op 'n gedeelte aangewend. /Liming wax applied to one side only of a jacaranda vase.

Vervolgens het Carel die aanwending van kleurstowwe met 'n alkoholbasis gedemonstreer. Die geskikste wyses om die kleurstof aan te wend is met 'n "airbrush", met 'n sagte lappie of met 'n sagte kwas. 'n Baie belangrike wenk wat Carel met ons gedeel het, is om altyd met die donker kleure te begin en geleidelik na die ligter kleure te werk. Verder is dit noodsaaklik om vooraf te eksperimenteer met die kleurstowwe op dieselfde soort hout om die effek waar te neem. Skuur die oormaat kleurstof af op al die onnodige plekke of om dit effens te verdof. Kleure word ook oor mekaar aangewend.



Die kleurstowwe word lukraak aangewend – begin met die donker kleure. / The stains are applied at random, starting with the dark colours.



Die bak is volledig gekleur en die kleure is netjies ineen-vermeng. / Staining of the bowl is finished with the colours blended in beautifully.



'n Voorbeeld van hoe kleur die kerfwerk op 'n bak se rand kan beklemtoon. / An example of how stain is used to enhance the carved pattern on the edge of a bowl.

Met min items op die huiswerktafel, het Alan Crawford sy bekommernis uitgespreek oor die draaiers se relatief min bydraes vir die jaarlikse uitstalling in Oktober. Die huidige draaiers sal 'n groot poging daarvoor moet aanwend want ons het nie meer die luukse van ruim bydraers soos Willie de Wet, David Malan en Reinald Böhringer nie. Alan het die bespreking van die huiswerk behartig, en die volgende foto's is van sommige van die huiswerkstukke wat uitgestal is.



So het die skraal oes op die huiswerktafel gelyk. / The homework table showing the small number of items.



Alan Crawford se besondere vaas van olienhout – 'n goeie voorbeeld van ovaal-draaiwerk. / Alan Crawford's exceptional wild olive vase – a good example of oval turning.



Nico Pienaar se vlak kiaatbak wat met 'n mengsel van byewas en rou lynolie afgewerk is. / Nico Pienaar's shallow bowl, finished with a mixture of bees wax and raw linseed oil.



'n Interessante pot deur Gerrie Grobler van knoppiesdoringhout wat met hars geïmpregneer is, en sy meranti-deksel met ingelegde hars. / Interesting pot by Gerrie Grobler from knob tree wood, impregnated with blue resin, and a meranti lid.



'n Pepermeul van blinkplatboontjiehout met kenmerkende pers strepe in die kernhout. Langsaan is 'n kersblaker volgens die tipiese Ruud Ozolnik-ontwerp waaraan die meultjie se vorm ontleen is. / A pepper grinder from purple wooded flatbean with the characteristic purple streaks in the heartwood. Alongside is a candle holder typical of the Ruud Ozolnik shape that influenced the shape of the grinder.



Mike Potgieter se jakarandapotjie met deksel. / Jacaranda pot with lid by Mike Potgieter.



'n Kiaatbord deur Alan Crawford. Die hout is van 'n mik in die boom afkomstig. / A kiaat platter by Alan Crawford. It was turned from crotch wood.



Jakarandavaas deur At Smit. Die gleuf verloop golwend om die vaas. / Jacaranda vase by At Smit. The groove forms a waving pattern on the outside.

Die volgende vergadering vir die draaiers is op Saterdag 28 September 2019 in die Scoutsaal wanneer Andy Sutton 'n praatjie/demonstrasie oor die draai van bakke met 'n natuurlike rand (bas aan) sal lewer.

Die uitdaging vir daardie byeenkoms is KLEUR OP DRAAIWERK. Jan Richter herinner die draaiers ook aan die huiswerk vir die November-byeenkoms, naamlik gedraaide kieries.

Ter afsluiting word Marietjie van der Merwe van harte bedank vir die voorsiening van die koffie/tee, beskuit en ander verversings. Dit bly 'n goeie trekpleister vir die draaiers se byeenkoms.

Editorial

Editor: Paul Roberts

E-Mail: paul.roberts@ptawoodworkers.com

Tel: 084 515 2773